



COPYRIGHT © 2009 ALL RIGHTS RESERVED. All ideas, designs, arrangements and plans indicated or represented by this drawing & written material appearing herein, constitute the original & unpublished work of C. O'Brien Architects, Inc. & the same may not be duplicated or disclosed to any persons, firm or corporation for any purpose whatsoever without the written consent of the Architect.



- Professional Waste Disposal
- Microwave, and Multi-Cycle Dishwasher
- GE Profile Stainless Steel Appliances: Self-Cleaning Range, Spacious Pantry
- Beautifully Crafted 42" Maple Kitchen Cabinetry
- Granite Countertops with Undermount Stainless Steel Sink

PROFESSIONALLY DESIGNED KITCHENS

- Programmable Thermostats (2)
- 50-Gallon Quick Recovery Gas Water Heater
- Energy-Efficient Insulation
- Insulated Front Door with Satin Nickel Lockset
- High Efficiency Heating and Central Air Conditioning
- Pella Low-E Insulated Windows
- Energy Star Rated Construction and Appliances

ENERGY EFFICIENT FEATURES

- Ceramic Tile (6x6) Flooring and Tub Surrounds
- Satin Nickel Towel Bars and Paper Holders
- Satin Nickel Moen Plumbing Fixtures
- Fiberglass Shower & Tub, Secondary Baths
- White Vanity with Cultured Marble Vanity Tops
- Including Generous Size Shower, Soaking Tub and Double Bowl Vanity
- Private Designer Bath for Owner's Suite

BATHROOM DETAILING

You'll love to be at home



QUALITY
1-2-10 Transferable Warranty
Pre-Construction Conference
Pre-Drywall Inspection
Pre-Settlement Demonstration
One Year Service Inspection

*at Woodmont
Essex II
Lot 112*

- Hardwood Flooring in Foyer, Powder Room and Kitchen
- Ceramic Tile (6x6) Laundry Flooring
- Wall-to-Wall Carpeting
- Central Air-Conditioning
- Full Basement
- Smoke Detectors with Battery Back-Ups
- Washer & Dryer Hook-Up
- Ventilated Closet and Pantry Shelving
- Teo Panel Interior Doors
- Satin Nickel Designer Lighting Fixtures
- Satin Nickel Door Hardware
- Powder Room with Pedestal Sink and Oval Mirror
- Opulent Owner's Suite with Walk-In Closet
- 4 Bedrooms and Two and a Half Baths Design
- 9' First and Second Floor Ceilings

EXTERIOR FEATURES & CUSTOM DETAILING

- Situated on 51.8 acres in Desirable Huntington Valley
- Convenient Location Near Routes 611 and PA Turnpike
- Tree Lined Lighted Streets
- Community Parks and Playgrounds
- Suocco and Stone Elevation per plan
- Professionally Designed Landscaping Package, including Sod
- Maintenance-Free Soffit & Fascia
- 30 Year Architectural Shingles
- Pella Low-E Insulated Windows
- Weatherproof Exterior Outlets and Hose Bids
- 2 x 6 Exterior Construction
- Integral, Rear Entry 2 Car Garage with Carriage Doors
- Suocco Sides and Rear to Grade

INCLUDED LUXURY FEATURES

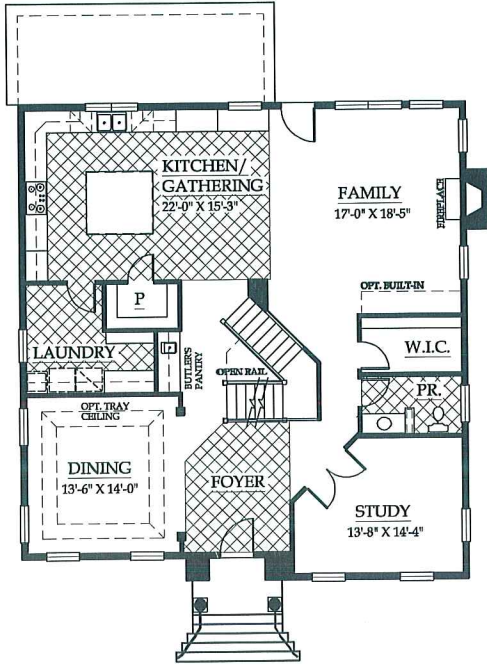


... THE *Essex II* ...
*at Woodmont
Lot 112*

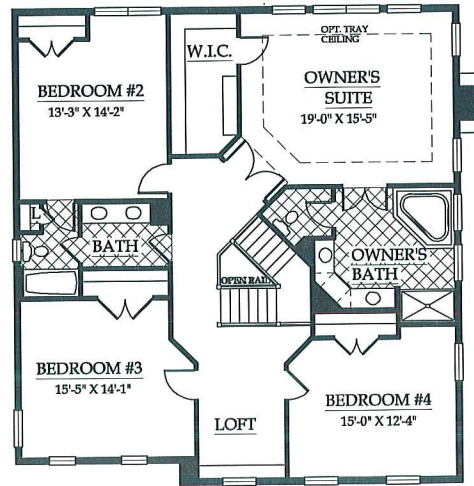
... www.cornellhomes.net ...

215.510.2992





FIRST FLOOR PLAN



SECOND FLOOR PLAN



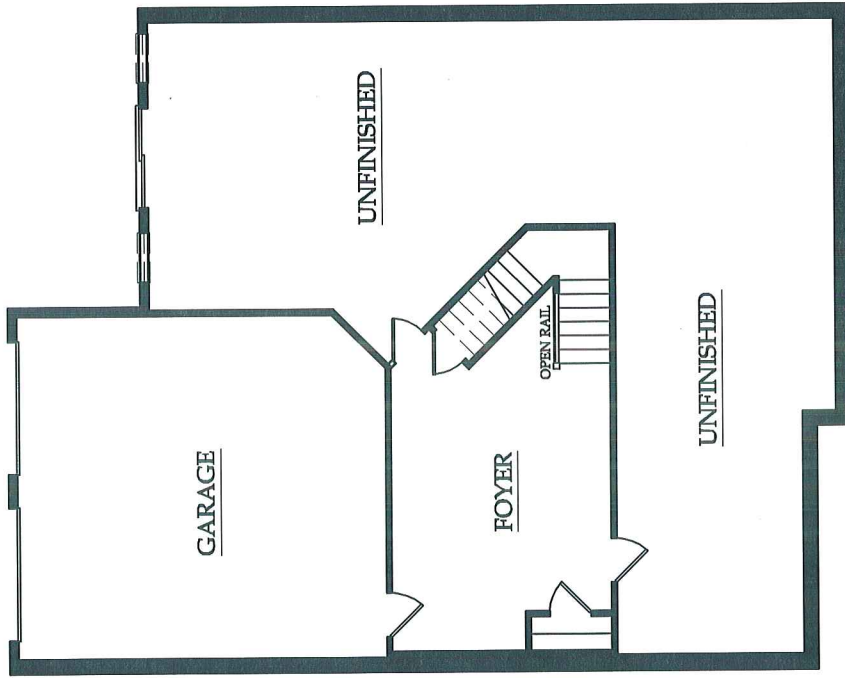
ELEVATION

... THE *Essex II* ...
at Woodmont
Lot 112

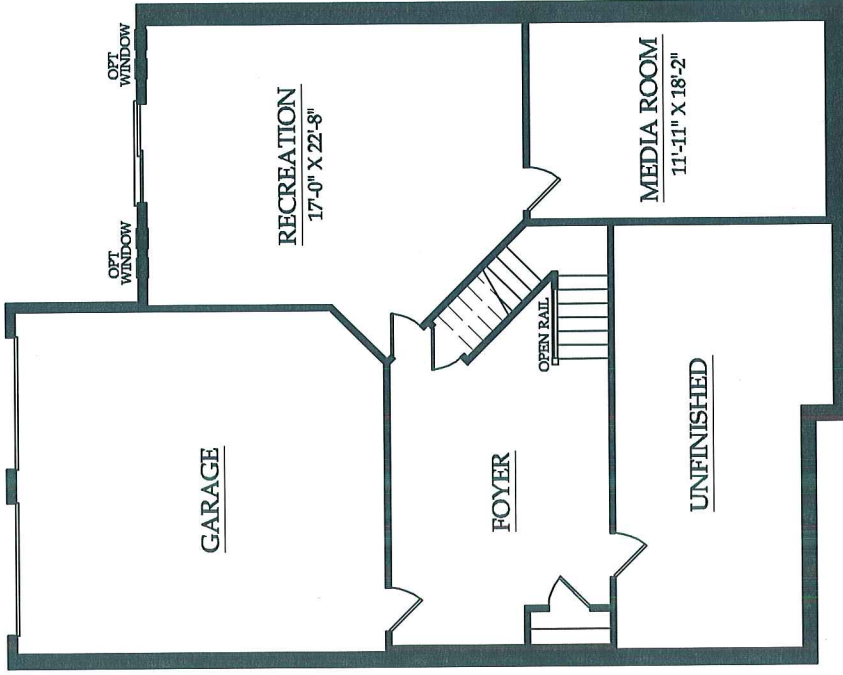
This brochure is for illustrative purposes only. All information is deemed reliable, but is subject to field variations and/or change without notice. Some windows and floor plans may vary with elevations and options. All information is subject to final approvals by Town Architect.

exclusively by **Cornell**
 Homes
 You'll love to be at home





STANDARD LOWER LEVEL PLAN



OPTIONAL LOWER LEVEL PLAN

...
THE Essex II
at Woodmont
Lot 112
 ...

This brochure is for illustrative purposes only. All information is deemed reliable, but is subject to field variations and/or change without notice. Some windows and floor plans may vary with elevations and options. All information is subject to final approvals by Town Architect.